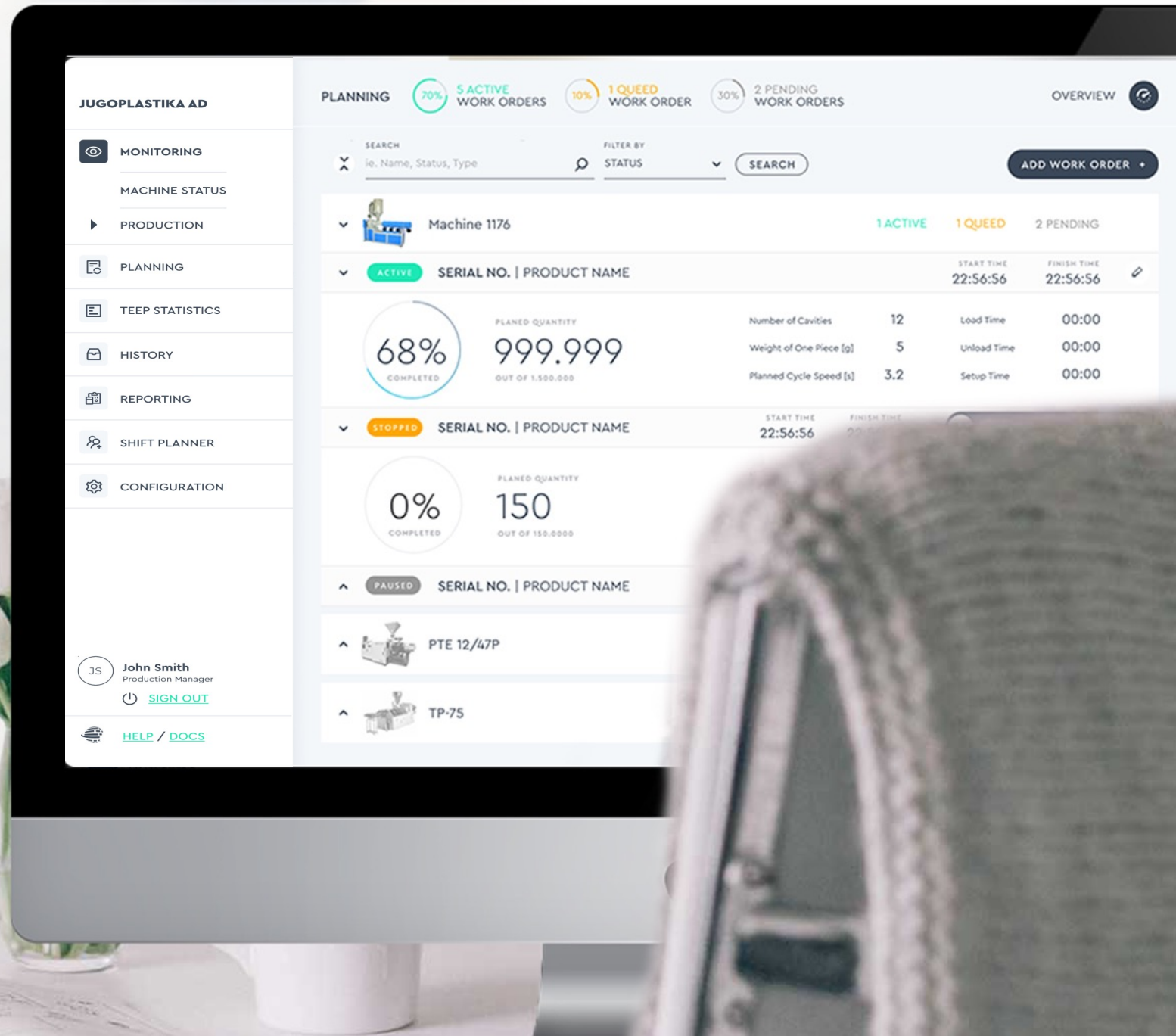
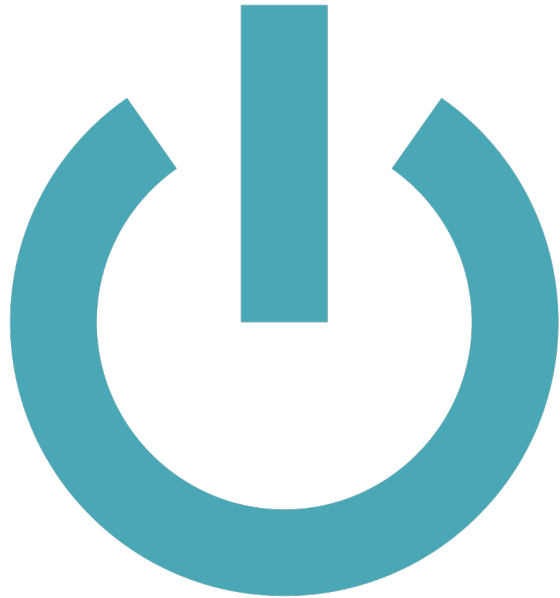


# Digitalisation, tool or solution?





# Industry 4.0 hype



Digital Transformation

Digital Solution

Digital Tool

# About Toptee MES



 **KOLOTREE**  
SCADA



2017

 **toptee**  
SaaS MES



2020

First Users



ERP Integration




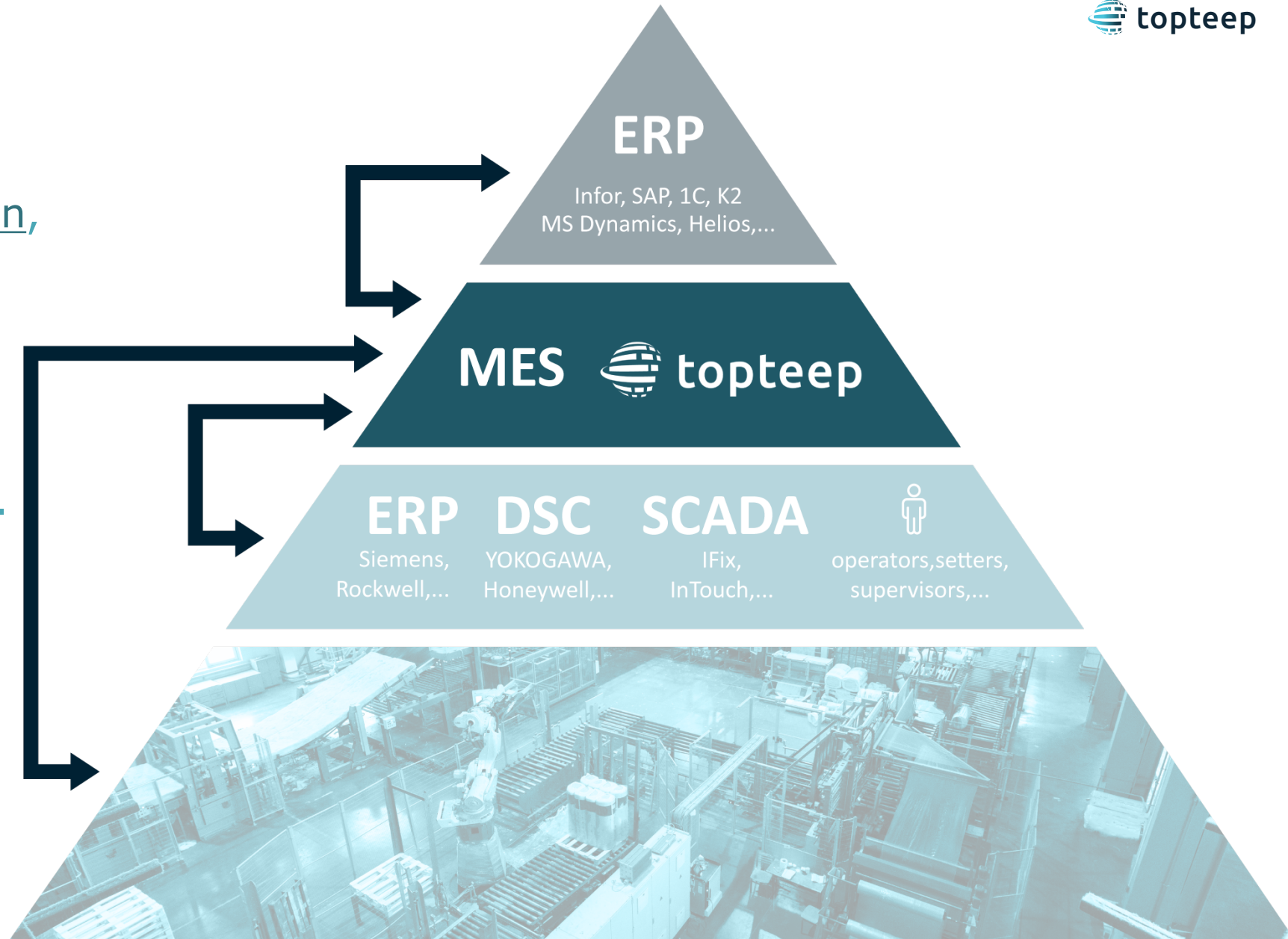
2021

Hardware  
Innovation

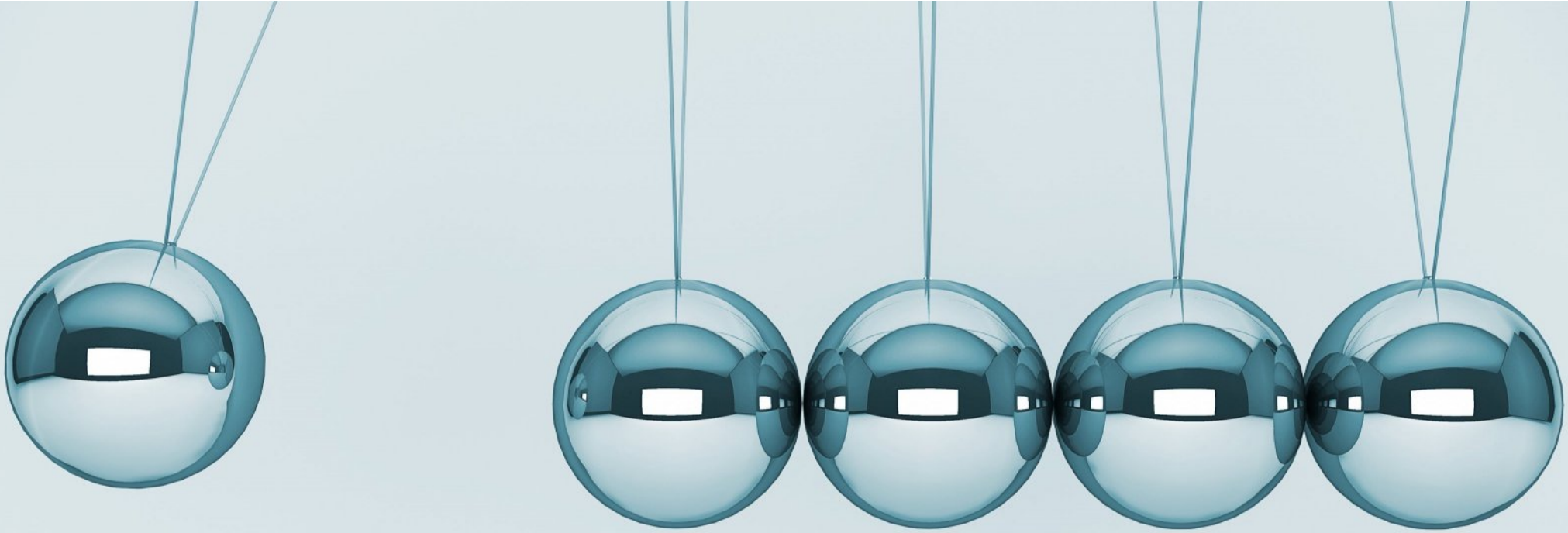


# Architecture

 **topteeep** is a MES solution,  
that monitors all events in  
manufacturing process,  
so it can spot losses in and  
lead toward higher efficiency.



# Impact we make



Revenue increase



Customer satisfaction



Business flexibility



Profitability

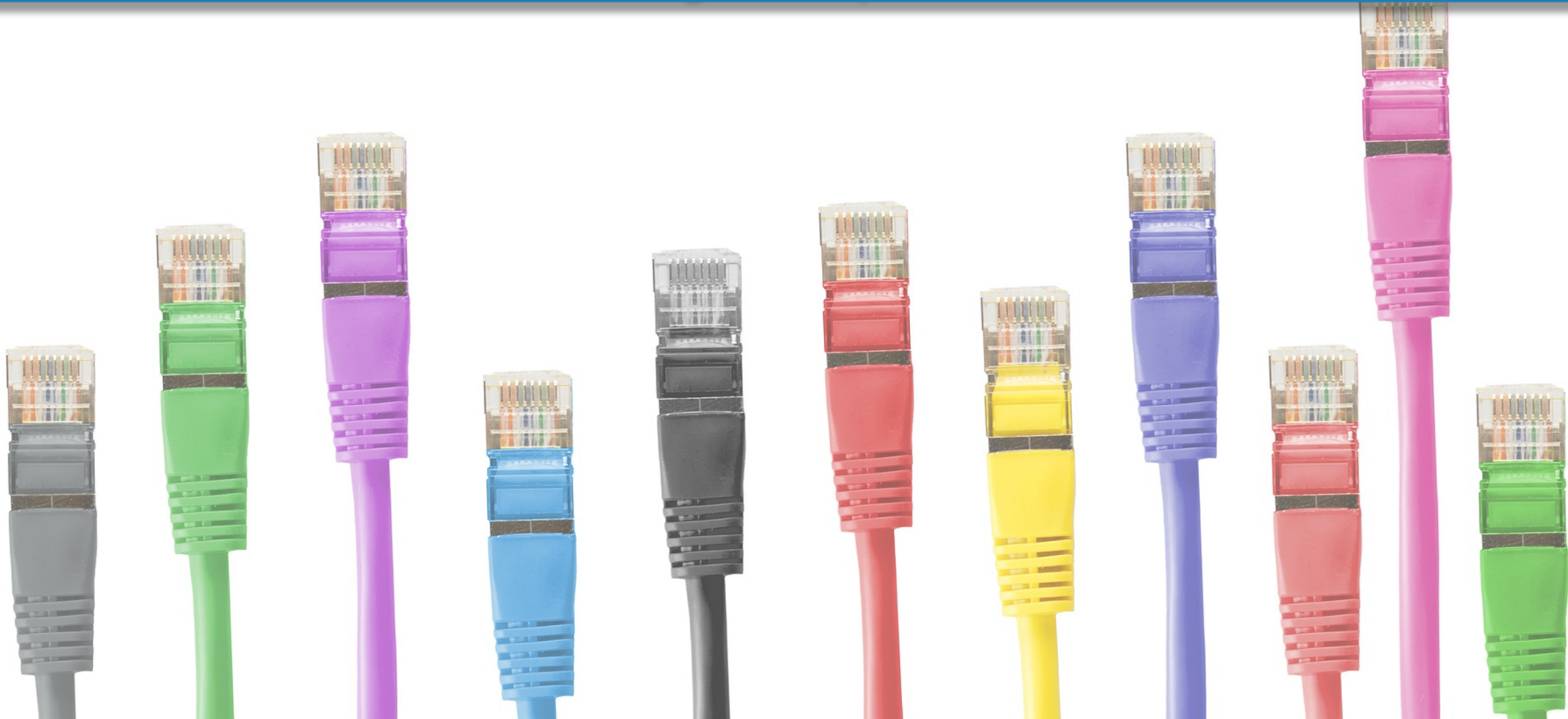
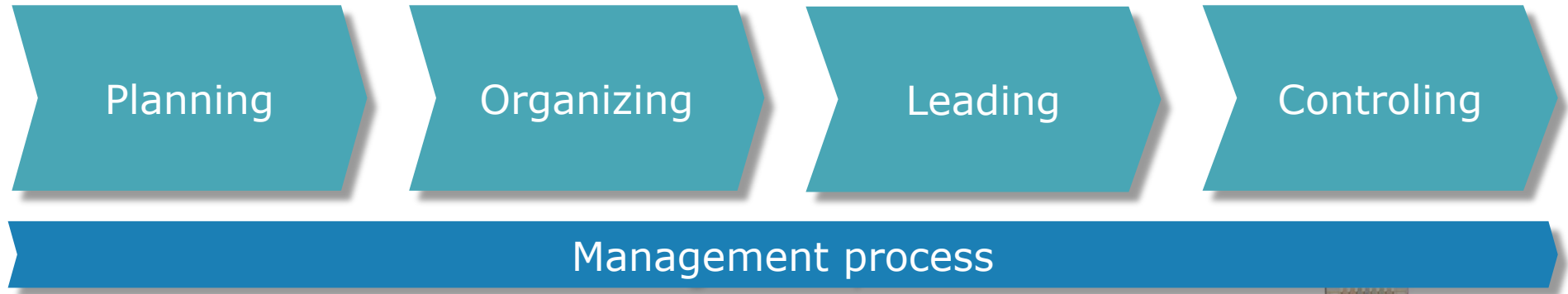


Employee satisfaction

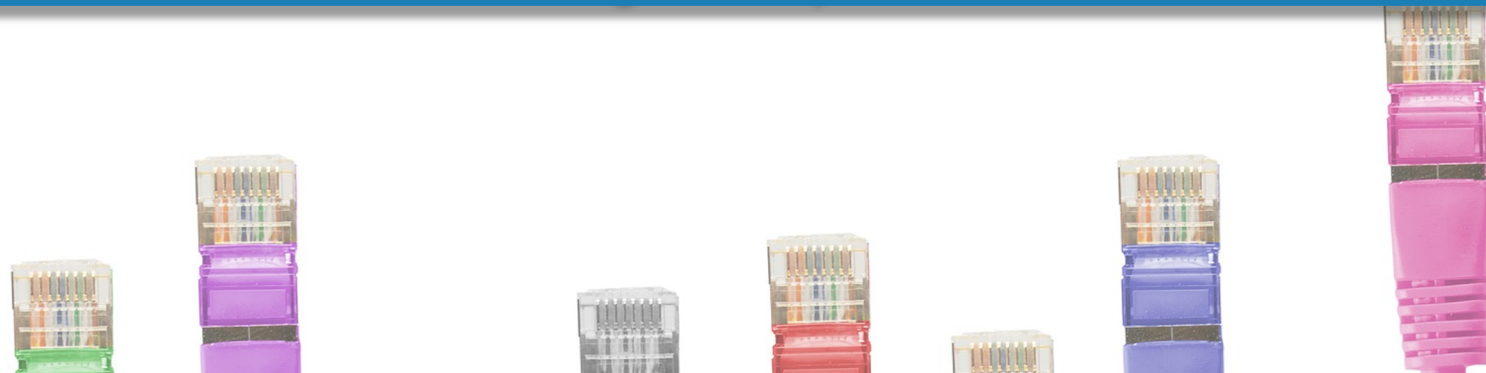


Environmental protection

# MES Our perspective



# MES Our perspective



ERP



ERP





# Client perspective

What is the efficiency?  
OEE



Status:  
Is it working or not?



It is running slower



Who is working right now?



Error:  
data accuracy



No one noticed that it is stopped



Waste:  
time for manual data collection



What material is used?



What is the end time?



e

t

c

# Client Expectations



No papers



One-click information



All information



No inventory differences



Full Traceability



Immediate productivity increase



Meeting culture development



# Analog/Digital Dance



A photograph of strawberry plants growing on a black plastic mulch. Several green, unripe strawberries are visible, along with one ripe red strawberry in the lower right. A single white strawberry flower is also present on the right side. The text "From Tool to Solution" is overlaid in white in the center.

# From Tool to Solution

# From zero to hero

- ◀ Machine history
- ↻ On / Off
- 📈 Speed
- 👥 Shop floor meeting
- 📢 Communication
- 📄 Reporting
- 🏠 Stock accuracy
- 🚚 Just in time
- 🔧 Maintenance
- 🏃 Employee performance

## ERP modules

- 🖨️
- 📊 Planning
- 👜 Sales
- 💰 Finance & Controlling
- 🏠 Warehouse
- 👥 HR

## Mng tools



- SIPOC
- Value Chain
- Mng. Process
- 5 S
- 4 M
- People
- 7 W
- Spaghetti diagram
- 6 Sigma

## Strategy





You can't *manage* it,  
until you don't  
*measure* **IT.**